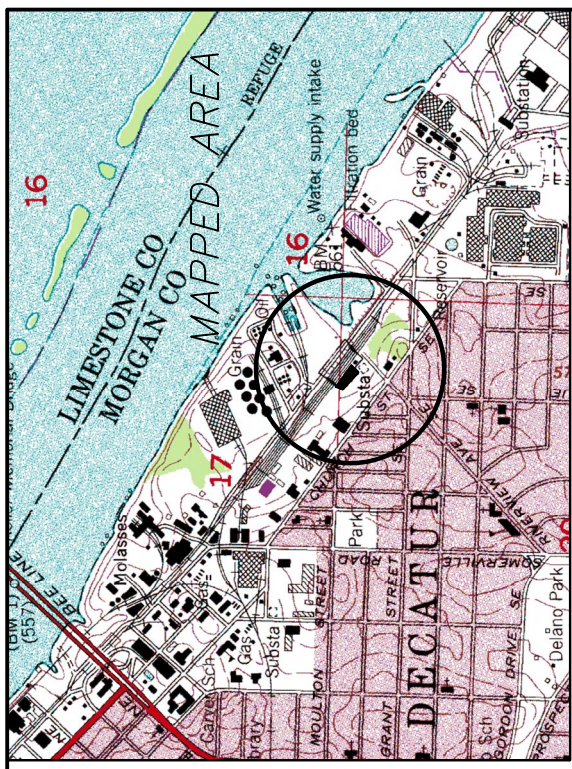
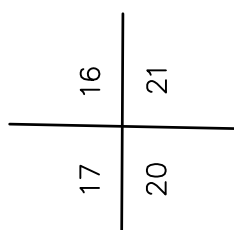


TO
TENNESSEE VALLEY AUTHORITY
NOTICE OF PUBLIC AUCTION



LOCATION MAP
1" = 2000'

XWR-632
LAND SALE
0.599 ± Ac.



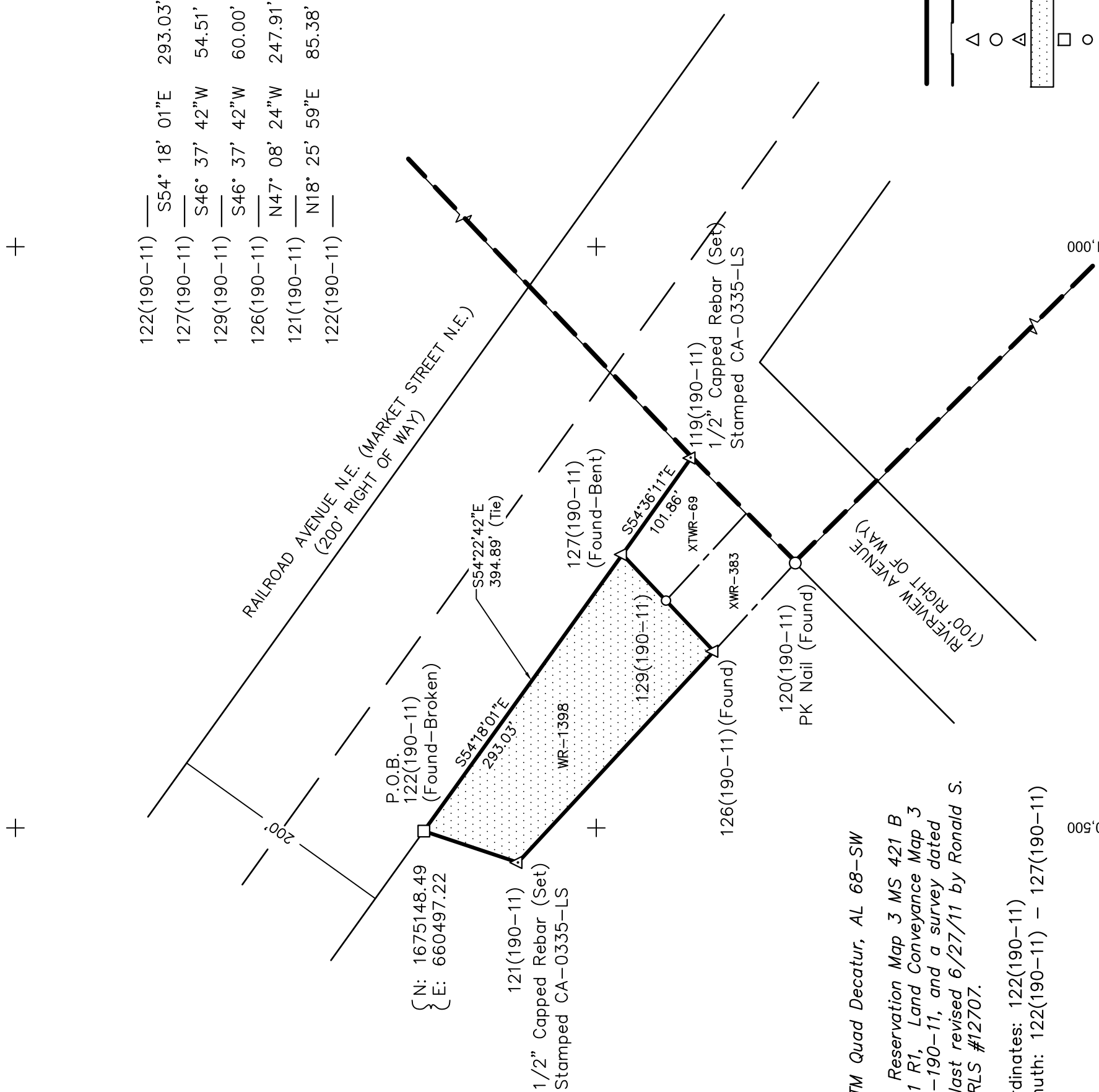
The positions of corners and directions of lines are referred to the Alabama State Coordinate System and NAD 27 Horizontal Datum. The elevations for establishing the contours are based on NGVD 1929.

LAND CONVEYANCE	
XWR-632, MAP 190-11	
MORGAN COUNTY, ALABAMA	
SECTION 17 & 20, TOWNSHIP 5S, RANGE 4W	
WHEELER RESERVOIR	
TENNESSEE VALLEY AUTHORITY	
SURVEY & PROJECT SERVICES	
CHATTANOOGA	AUGUST 2011
03MS	422 B 659 (D) R0
03190-11WEH1142	

- 122(190-11) — S54° 18' 01"E 293.03'
- 127(190-11) — S46° 37' 42"W 54.51'
- 129(190-11) — S46° 37' 42"W 60.00'
- 126(190-11) — N47° 08' 24"W 247.91'
- 121(190-11) — N18° 25' 59"E 85.38'
- 122(190-11) —

LEGEND

- TVA Boundary
- Flowage
- △ Angle Iron
- Corner as Described
- △ Iron Rod
- Abandonment Area
- Stamped TVA Monument
- Point
- - - Adjacent Property Line



Located on VTM Quad Decatur, AL 68-SW
Compiled from Reservation Map 3 MS 421 B 526-D-190-11 R1, Land Conveyance Map 3 MS 421 A 511-190-11, and a survey dated 3/23/11 and last revised 6/27/11 by Ronald S. Stroup PE & RLS #12707.

Basis for Coordinates: 122(190-11)
Basis for Azimuth: 122(190-11) - 127(190-11)

SURVEYED	PCSB10	DATE	3-21-11
GENERATED	JGF	DATE	8-16-11
CHECKED	BES	DATE	8-17-11